

## Application Note 0083

## Using the DataLogger to download the PV150, PV200, PV210 or Survey 200R

The following document is intended to be a troubleshooting guide to ensure you are setting up your Seaward software / instrument(s) in the correct manner. Please check all aspects of this before contacting the technical support helpline.

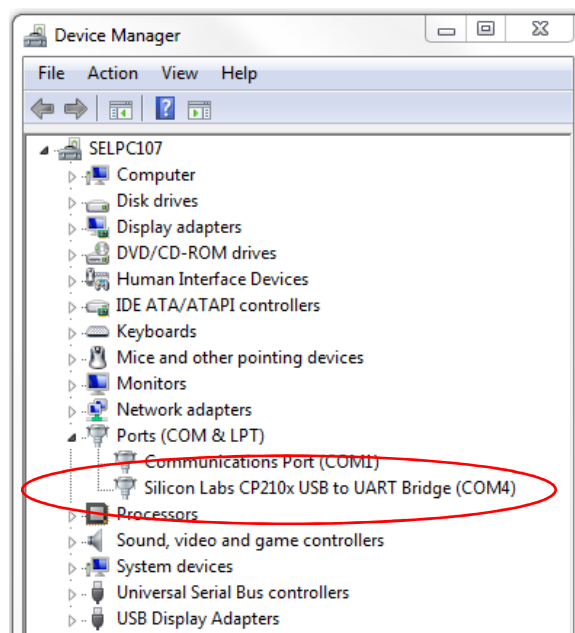
- Please register your Seaward product at <http://www.seaward.co.uk/userfiles/register-product/select-product.php> to activate your warranty, receive support and other benefits.
- You may need to be an administrator to do this.

## Installing the DataLogger

- 1) The Seaward DataLogger and drivers should be on the utility disc supplied with your instrument, however, this does not apply in all cases.
- 2) The DataLogger can also be downloaded from the following link: [http://www.seawardsolar.com/solar-downloads?id=Software Download](http://www.seawardsolar.com/solar-downloads?id=Software+Download)
- 3) Install the DataLogger following the on-screen instructions.

## Method 1: Installing the Drivers from your Instrument

- 1) Connect your device to the PC using a USB connector.
- 2) The very first time you do this, your PC will automatically install a COM port driver. You can check which COM port is being used by viewing in the Device Manager. E.g.: **Silicon Labs CP210x USB to UART Bridge (COM4)**. For an example on a Windows 7 PC, please see;



## Application Note 0083

**Note:** Typing “Device Manager” in the “Search programs and files” on your PC, option should allow you to select the above window from the list of items displayed. You can also view “Device Manager” from the “Control Panel”.

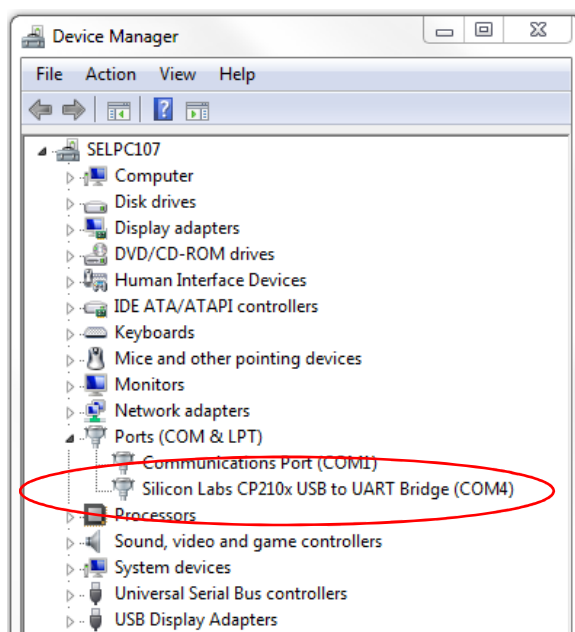
## Method 2: Installing the Drivers from the Website Link

- 1) If Method 1 will not work (this may be the case for newer operating systems / PCs), you can try downloading the driver for your PC from the following web link:

<https://www.silabs.com/products/mcu/Pages/USBtoUARTBridgeVCPDrivers.aspx>

**Note 1:** You will need to confirm you are downloading the correct driver for your PC operating system.

- 2) Again you can check which COM port is being used by viewing in the Device Manager. E.g.: **Silicon Labs CP210x USB to UART Bridge (COM4)**. For an example on a Windows 7 PC, please see;

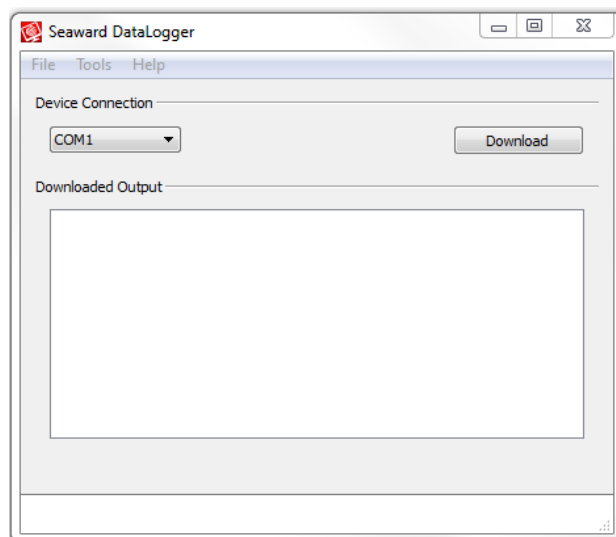


**Note:** Typing “Device Manager” in the “Search programs and files” on your PC, option should allow you to select the above window from the list of items displayed. You can also view “Device Manager” from the “Control Panel”.

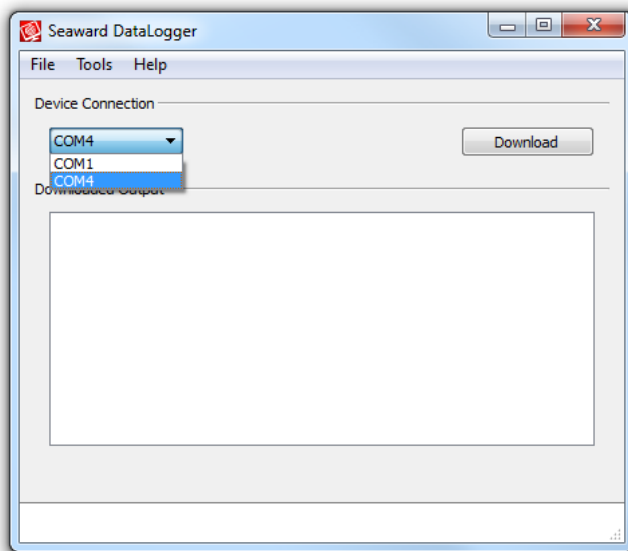
## Application Note 0083

## Downloading your Instrument to the DataLogger

- 1) Make sure the instrument is connected to the PC, using the USB lead, and launch the Seaward DataLogger to display the utility;



- 2) Select the COM port to which the instrument is connected (if not sure of correct COM port, see the “Device Manager” / or the instructions for installing drivers in Method 1 or 2);





**Note:** If the COM port cannot be selected – make sure the instrument is connected before launching the DataLogger program.

- 3) Select “Download” on the DataLogger, this button will switch to “Cancel”, waiting for the download to be initiated.

## Application Note 0083

4) (a) Downloading the instrument, the PV200 / PV210;

4) (b) On your PV200 / PV210 select the “Memory and recall key”  .


4) (c) Select and hold “Memory and recall key”  again – this should begin the download and data from the PV200 / PV210 will appear in the “Downloaded Output” window of the DataLogger Utility.

4) (d) Once the download is complete a “Save downloaded data to file” window will allow the download to be saved as a CSV file.

4) (e) As an example of the output headers, for the PV200 / PV210, see below (note, file opened in MS Excel):

	A	B	C	D	E	F	G	H	I	J	K	L	M	N	O	P	Q	R
1	Serial no	17H-0273																
2	Index	TestType	Rpe (Ohm)	Voc (VDC)	Isc (ADC)	Riso (MOhm)	Viso (V)	Iclamp (Amp)	ac/dc	Irr (W/m2)	Ta (C)	Tpv (C)	HH:MM:SS	DD/MM/YYYY	FF	Vmpp (V)	Imp(A)	IVCurve

5) (a) Downloading the instrument, the PV150;

5) (b) Select and hold “Memory and recall key”  – this should begin the download and data from the PV150 will appear in the “Downloaded Output” window of the DataLogger Utility.

5) (c) Once the download is complete a “Save downloaded data to file” window will allow the download to be saved as a CSV file.

5) (d) As an example of the output headers, for the PV150, see below (note, file opened in MS Excel):

	A	B	C	D	E	F	G	H	I	J	K	L	M	N
1	Serial no	44D-0003												
2	Index	Rpe (Ohm)	Voc (VDC)	Isc (ADC)	Riso (MOhm)	#NAME?	Viso (V)	Iclamp (Amp)	ac/dc	Irr (W/m2)	Ta (C)	Tpv (C)	HH:MM:SS	DD/MM/YYYY

6) (a) Downloading the instrument, the Survey 200R;

6) (b) Once you select “Download” on the DataLogger the Survey 200R will start to download and the data will appear in the “Downloaded Output” window of the DataLogger Utility (you do not need to select any buttons on the Survey 200R).

6) (c) Once the download is complete a “Save downloaded data to file” window will allow the download to be saved as a CSV file.

6) (d) As an example of the output headers, for the Survey 200R, see below (note, file opened in MS Excel):

	A	B	C	D	E	F	G	H	I
1	Index	Irr	Tpv	Ta	Date	Time	Irr Unit	Temp Unit	Start(>) / Stop(<)